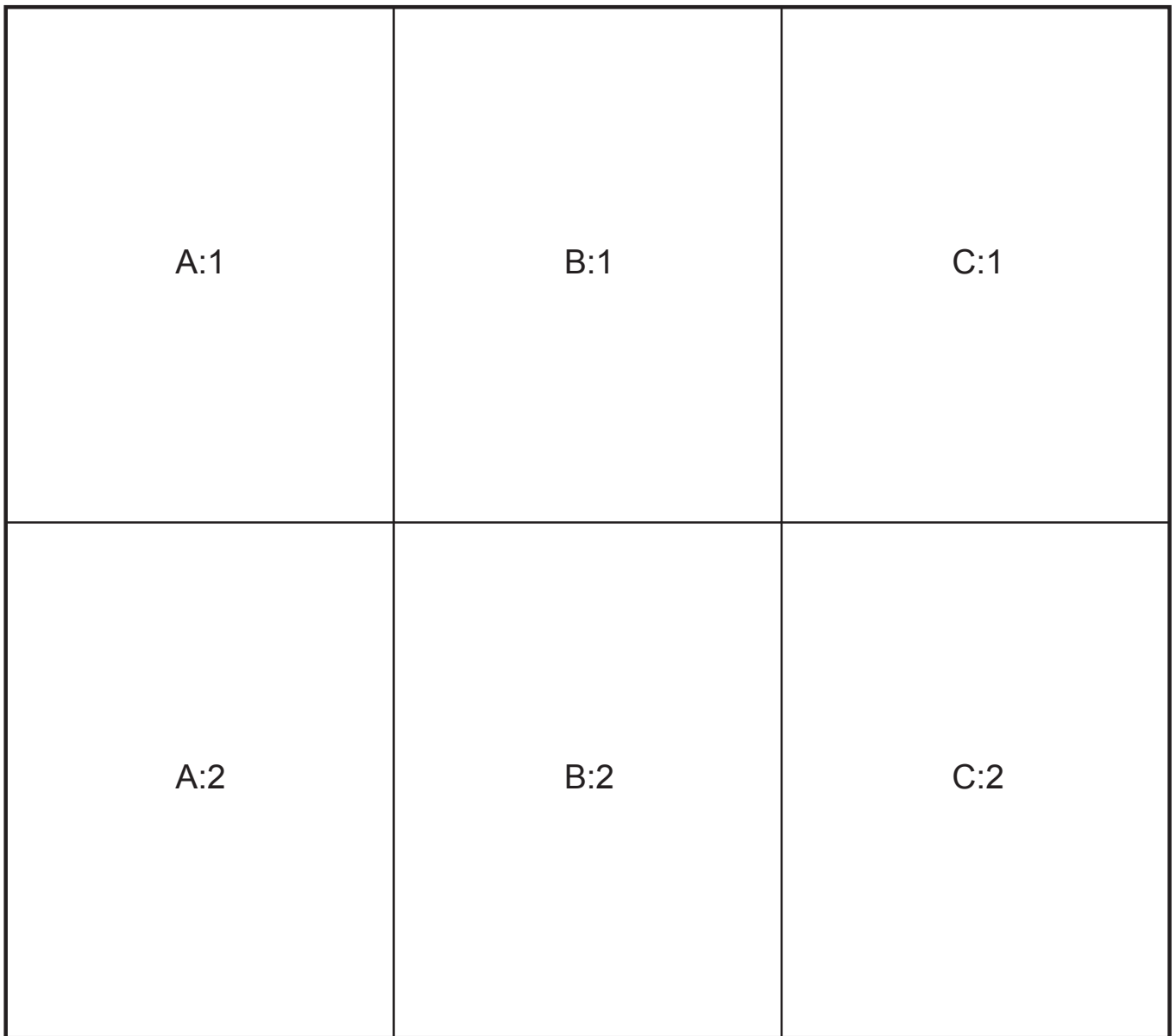


garden sal - border

Below is a plan showing how the chart pages fit together.
The page number is shown at the top left of each chart page.



design size

max. stitch count 100sts x 100sts
finished size | 7.1 x 7.1 inches
when sewn on 14 count aida or
28 count evenweave

stitches used

whole cross stitch
back stitch

Key refers to
DMC stranded thread

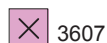
cross stitch
using 2 strands



3799



B5200



3607



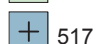
3609



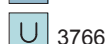
988



164



517



3766



434

cross stitch
using 2 strands



3820



948

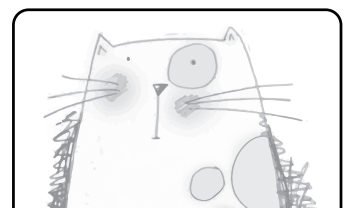
back stitch
using 2 strands



3799



988



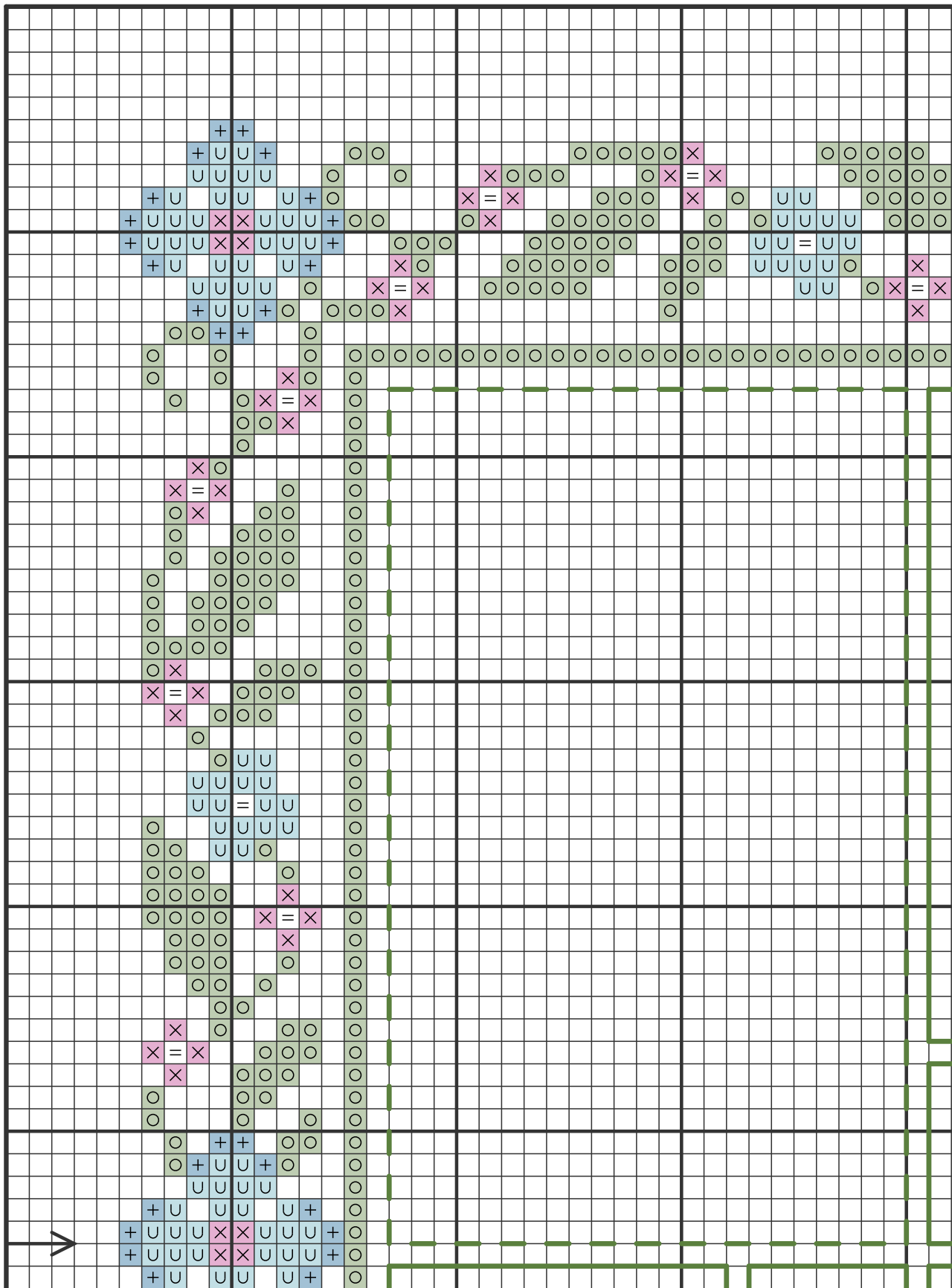
Durene J Cross Stitch

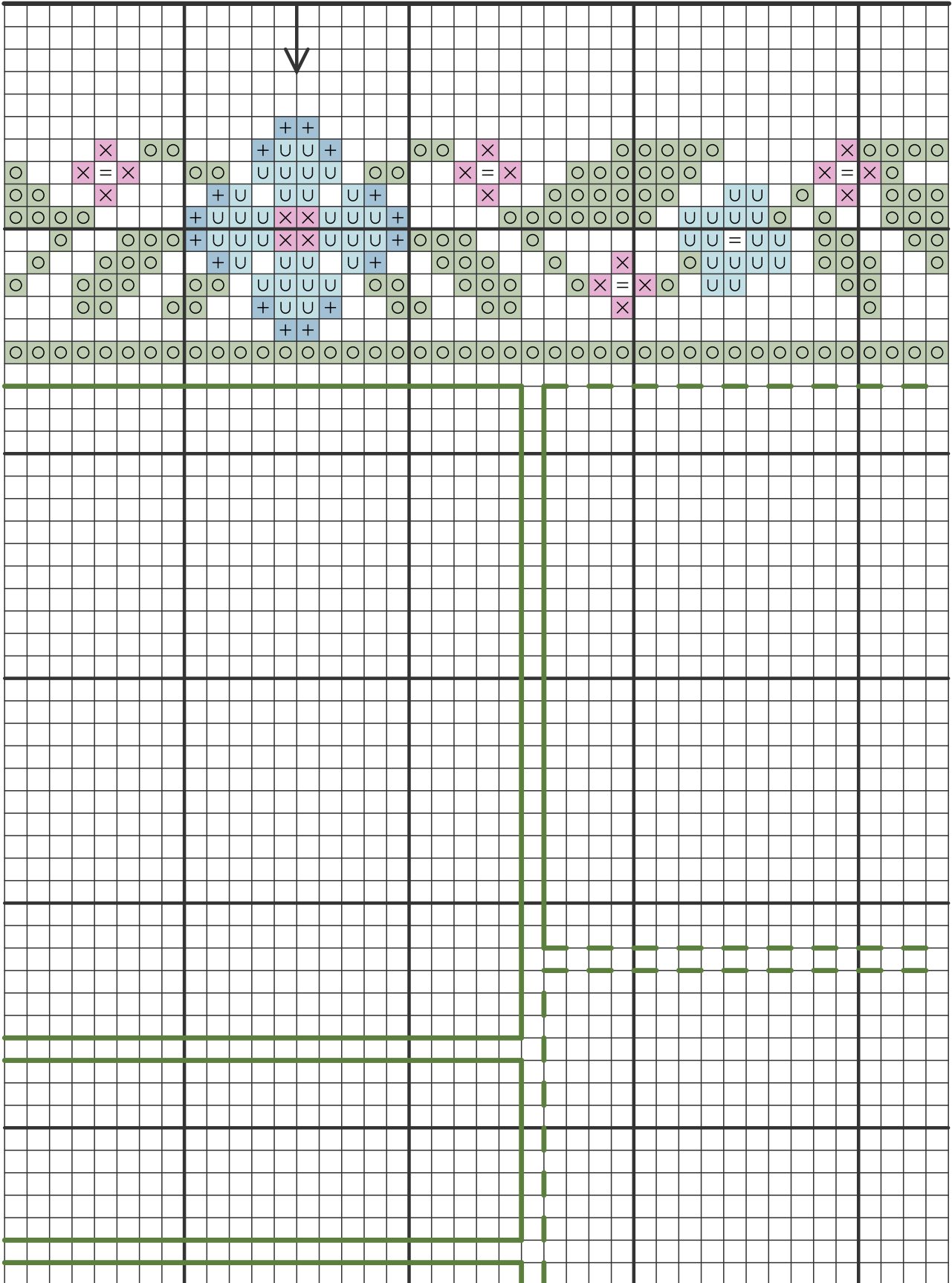


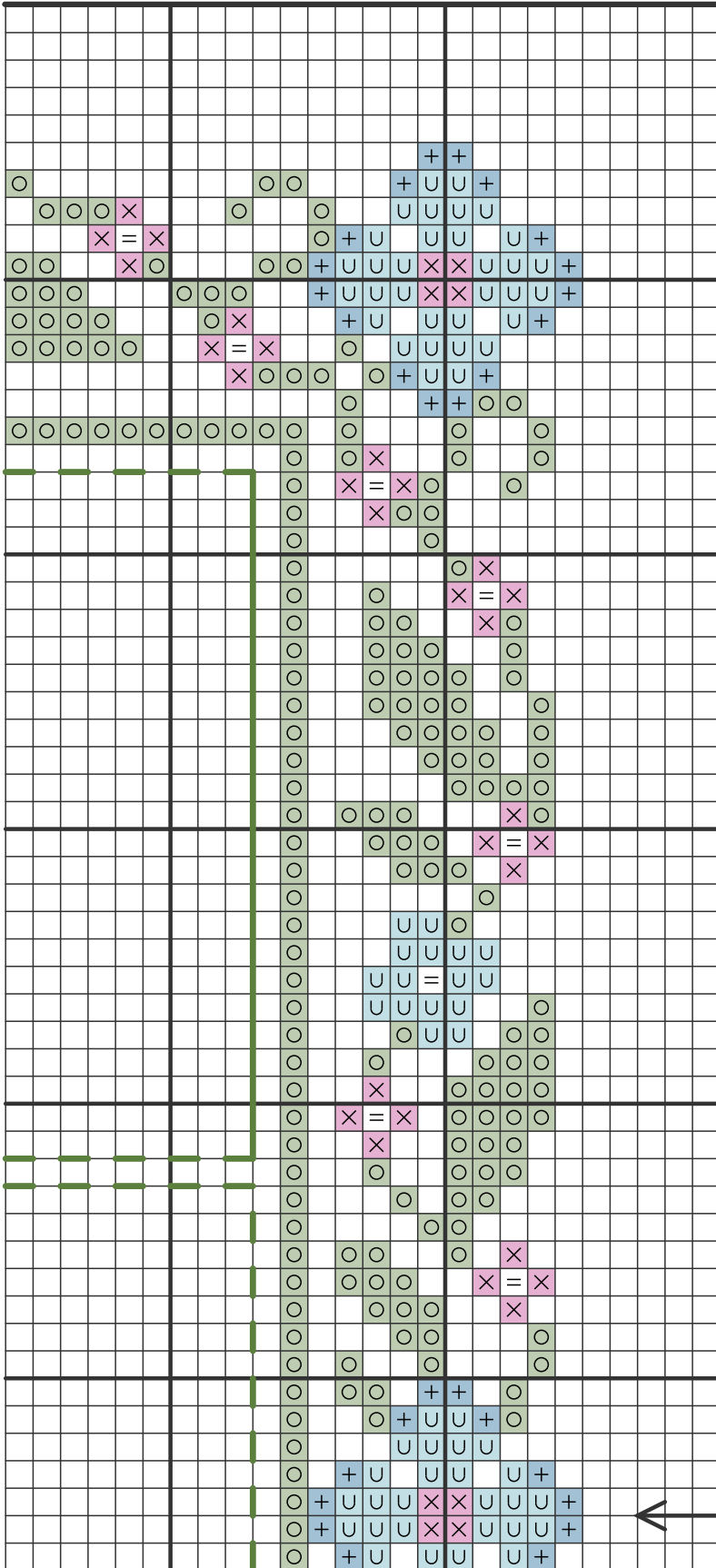
Durene Jones Cross Stitch

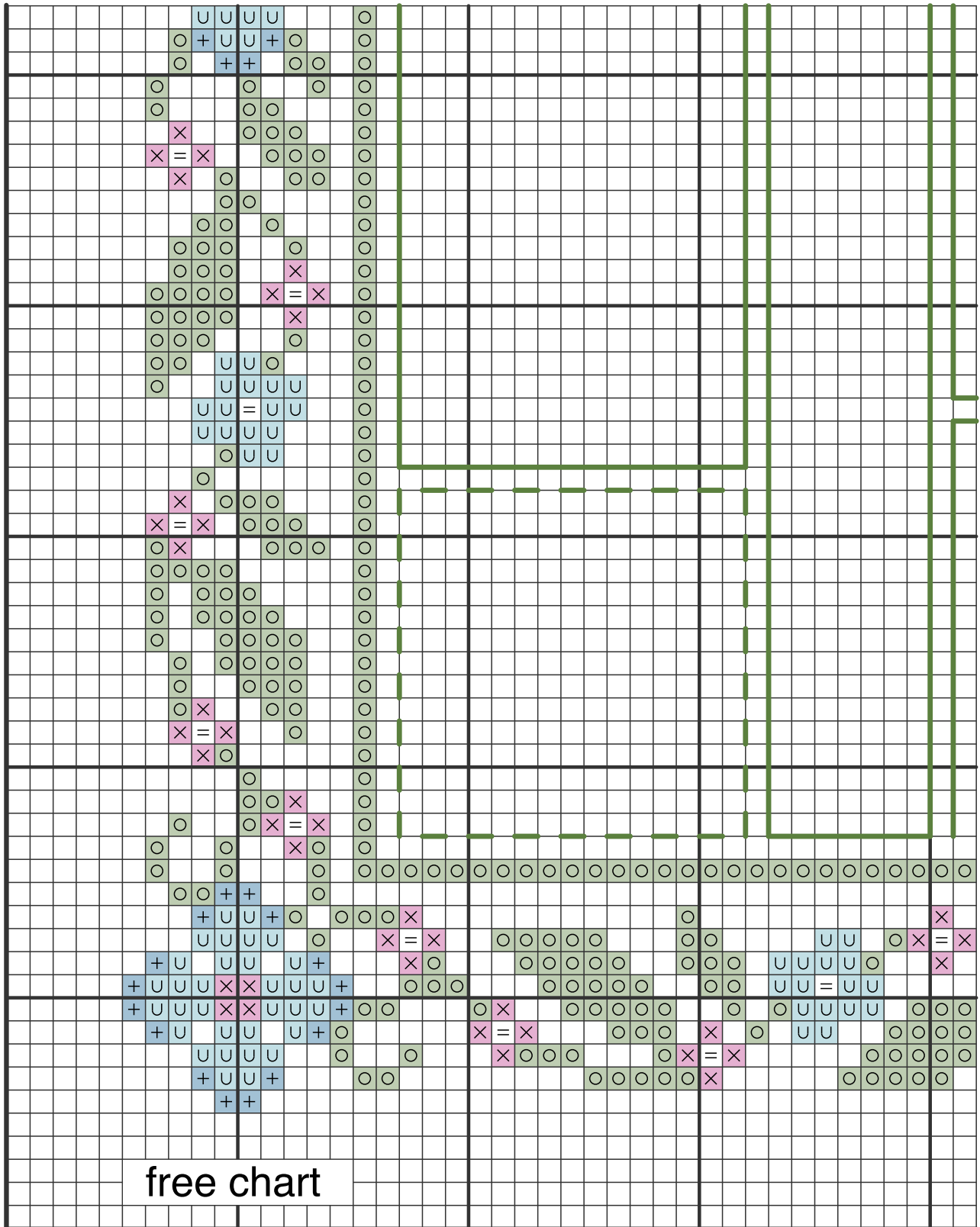


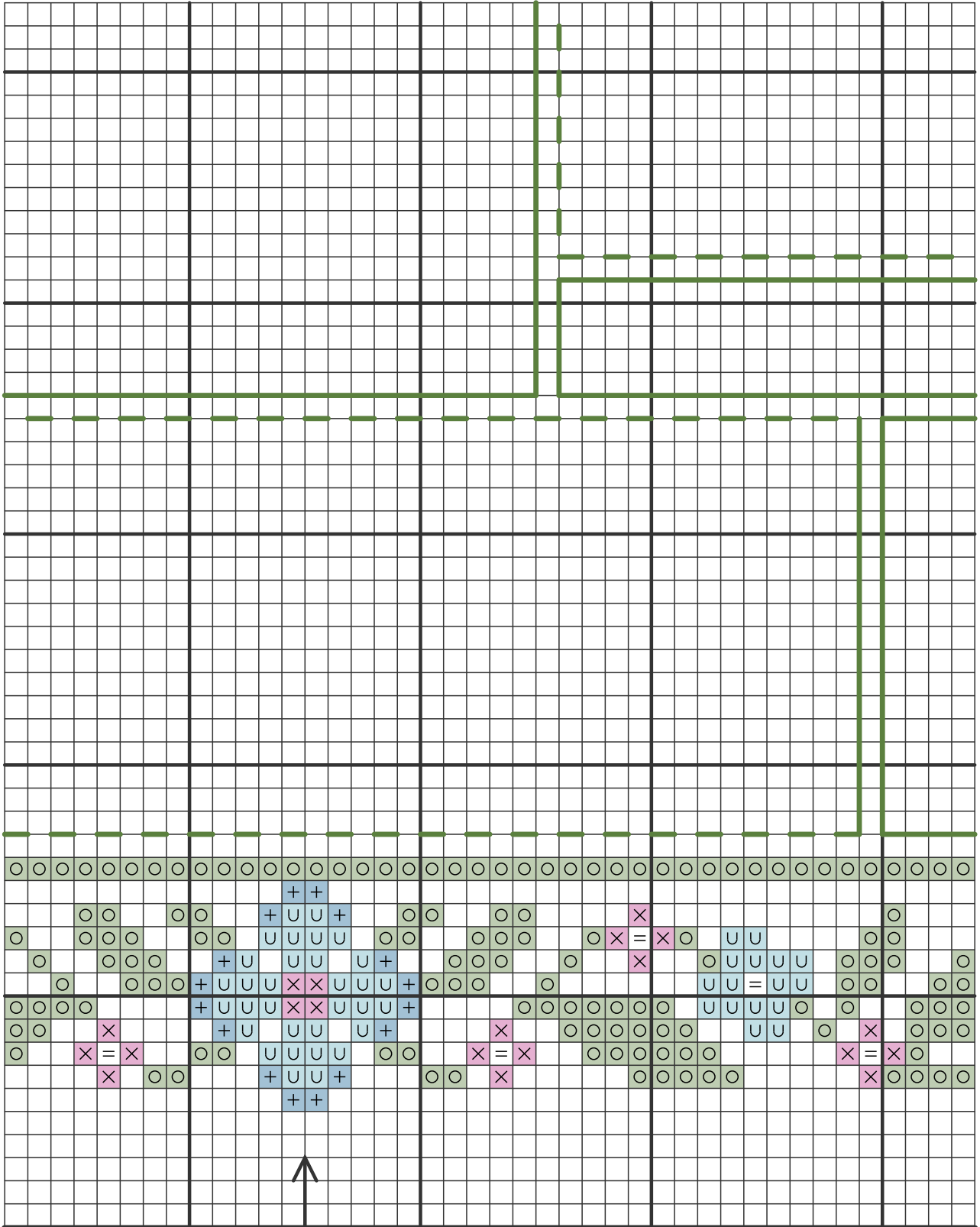
Durene Jones Cross Stitch











© Durene Jones 2020